


Eat Kington

& Surrounding Areas 2024



VISIT **HEREFORDSHIRE**

brought to you by

 Herefordshire
County BID



The Swan Hotel

Church St, Kington, HR5 3BE

About

The Swan Hotel is a traditional independently run steakhouse and hotel located in the market town of Kington on the Welsh border where we offer the finest cuts of carefully selected beef, hung for 28 days and is sourced locally alongside some other tasty homemade pub classics. Serving 2 real ales, over 50 different types of gin and everything else you'd expect in a traditional pub. Sky and TNT Sports shown here. FREE WiFi. Teas / coffees served all day everyday.

Opening times:

Food served

Mon-Sat: 12 noon-2pm, 5pm-9pm

Sun: 12pm-2pm

Contact: Casey or Luke

Email: via website

Website: www.theswanhotelkington.co.uk

Phone: 01544 239433

Disabled facilities. Pets in bar only.

The Burton Hotel

Mill St, Kington, HR5 3BQ

About

Town centre hotel serving lunches and evening meals all week.

Opening times:

Check web site for opening times

Contact:

Email: info@burtonhotel.co.uk

Website: www.burtonhotel.co.uk

Phone: 01544 230323

Disabled facilities. Pets allowed.

The Royal Oak

Church St, Kington, HR5 3BE

About

Historic inn serving bar meals and teas during opening hours. Garden and Sunday carvery.

Opening times:

Call for opening times

Contact: Susan Merriman

Email: susanmerriman255@gmail.com

Phone: 01544 231864

No Disabled facilities. Pets allowed.



Ye Olde Tavern

22 Victoria Road, Kington, HR5 3BX

About

Small pub with two real fires, serving 4 real ales, two ciders, one lager and one premium lager. All ales are local and one cider is from a local brewery.

Opening times:

Mon-Tues: 5pm-11pm (drink only).

Wed-Fri: 5pm-11pm food served until 9pm.

Sat-Sun: Opens from 12 noon food served all day.

Contact: Maureen

Email: Yeoldetavern22@gmail.com

Phone: 01544 231417

Ramp for disabled access. Pets allowed.

The Python's Arms

Penrhos Court, Lyonshall, Kington HR5 3LH

About

Set in the grounds of medieval Penrhos Court, The Python's Arms is located in an 18th century barn that was once a brewery made famous by its co-founder Terry Jones of Monty Python. Offering a selection of locally sourced ales, ciders and spirits all to be enjoyed in a warm, welcoming, traditional country tavern.

Opening times:

Tuesday: 5pm - 10.30pm

Thursday & Friday: 5pm - 11pm

Saturday: 12pm - 11pm

Sunday: 12pm - 10pm

Contact:

Email: info@penrhos-court.co.uk

Website: www.penrhos-court.co.uk

Phone: 01544 230007

No disabled facilities. Well behaved dogs on leads allowed.

The Queens Head

51 Bridge St, Kington HR5 3DW

About

Traditional pub. A choice of three real ales changing weekly. Pub games, darts, pool. Jukebox. Sky Sports. Warm welcome.

Opening times:

Closed Mondays

Contact:

Email: queensheadkington@outlook.com

Phone: 01544 329779

No disabled facilities. Pets allowed on leads in the bar area.

KINGTON RESTAURANTS, CAFES & TEA ROOMS

Border Bean

22-24 High Street, Kington, HR5 3AX

About

A friendly, independent coffee shop and gallery space established in 2013. We offer quality drinks, homemade cakes, light lunches and snacks in spacious and comfortable surroundings.

Opening times:

Mon-Thurs: 9.30am-3.30pm

Fri & Sat: 9.30am-4pm

Closed Sun

Contact: Beccy Haydon & Kathy Thompson

Email: borderbean@gmail.com

Phone: 01544 231625

Disabled access. Pets allowed outside only.



Maples Tea Rooms

Hergest Croft Gardens, Kington, HR5 3EG

About

Maples Tearoom serves home cooked refreshments, breakfast, lunch or cakes using local produce. You can sit in the winter with the open fire lit, or with admission to the gardens, you can sit in the summer enjoying the views from the veranda or terrace. Takeaways are available. The tearoom is situated in the beautiful Hergest Croft Gardens with views looking towards the Black Mountains. We are also on the footpath leading to Hergest Ridge and Offa's Dyke walk.

Opening times:

Jan-Feb: 10.30am to 3.00pm, Tues, Thurs, Sat, Sun

March: 11.00am to 4.15pm, Tues, Thurs, Sat, Sun

April-Oct: 11.00am to 4.15pm, every day

Nov-Dec: 10.30am to 3.00pm, Tues, Thurs, Sat, Sun

Contact: Mell Lloyd

Email: maplestearoom@hergest.co.uk

Phone: 07970 595 420

Website: maplestearoom.co.uk

Disabled access. Pets allowed.

The Cattle Shed Cafe

Penrhos Court, Lyonshall, HR5 3LH

About

A warm rustic café in the old cattle byre across the court yard from Penrhos Court manor house. Serving homemade cakes and freshly prepared food.

Opening times:

Mon-Fri: 9am -4pm

Sat/Sun: 10am-4pm

Evening: Thurs-Sat 6.30pm-11pm

Contact: Mark or Laura.

Email: info@penrhos-court.co.uk

Website: www.penrhos-court.co.uk

Phone: 01544 230007

Disabled access. Well behaved dogs on leads allowed.



KINGTON TAKEAWAY SNACKS & DRINKS

The Angel Fish Bar

6 Bridge St, Kington, HR5 3DL

About

We serve traditional fish and chips as well as kebabs.

Opening times:

Tue, Wed, Thurs, Sun: 4.30pm-9.00pm

Fri & Sat: 12.00pm-2.00pm & 4.30pm-10.00pm

Closed Mon

Contact: Ismail Ozdemil

Email: Angelfishbar6@gmail.com

Phone: 01544 230684

Disabled access. Pets allowed

Grumpie Grampies

59 Bridge St, Kington, HR5 3DJ

About

We are a bakery/café. We provide a large variety of food and cakes to sit in or take away.

Opening times:

Mon-Sat: 7.30am-4pm

Contact: Nigel Pullen

Facebook: [grumpie grampies](https://www.facebook.com/grumpiegrampies)

Email: Pullen353@btinternet.com

Phone: 01544 231881

Disabled access to shop but no toilets. Pets allowed.

No 25 Delicatessen

25 High St, Kington, HR5 3AX

About

Local, British, Continental cheese. Loose tea, coffee beans (can be ground), Herbs and spices. Local apple juice, chutneys, marmalade and preserves. Bread and milk. Foodie gifts. Always a warm welcome.

Contact: Helen Yeomans

Email: Number25deli@gmail.com

Website: www.number25deli.co.uk

Phone: 01544 230330

No disabled access. No pets allowed.

Opening times:

Mon, Tues, Thurs, Fri: 8.30am-4pm

Sat: 8.30am-1pm

Closed Wed



GLADESTRY

The Royal Oak Gladestry

The Royal Oak, Gladestry, HR5 3NR

About

Traditional village inn serving light lunches, home cooked meals and real ales.

Contact: Sarah

Email: royaloak.gladestry@outlook.com

Website: www.theroyaloakgladestry.co.uk

Phone: 01544 370586

Opening times:

For opening times call or check website

No disabled access. Dogs allowed in bar only.



The New Inn

Market Square, Pembrige, HR6 9DZ

About

Traditional Inn with 2 bars. Real Ales, local gins and ciders. Bar lunches and suppers, separate dining room for parties or meetings. Outside seating area. Real old fashioned pub!

Opening times:

Day time: 11am to 3pm (2.30pm in winter.)

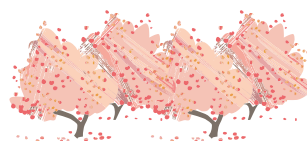
Evening: 6pm-11pm

Closed: Tues

Contact: Jane Melvin

Phone: 01544 388427

No disabled access. No pets allowed.



The Kings House

East St, Pembrige, HR6 9HB

About

Brunch lunch and afternoon tea. Sunday Lunch. Themed evenings last Saturday in the month. Eg tapas, Italian, Greek.

Opening times:

Wed-Sat: 11am-4pm

Sun: from 12 noon

Contact: Jayne Jones

Email: kingshousepembrige@gmail.com

Website: www.kingshousepembrige.co.uk

Phone: 01544 388029

Disabled access to restaurant and garden.

Disabled toilets in adjacent car park. Pets allowed.

PRESTEIGNE

The Workhouse Gallery Cafe Industrial Estate, Presteigne, LD8 2OT

About

Light lunches, morning pastries and cakes.

Opening times:

Wed-Sat: 10am-4pm

Contact: Rose

Email: info@theworkhousegallery.co.uk

Website: www.theworkhousegallery.co.uk

Phone: 01544 267864

Disabled access. Pets allowed.

Crocketts 7 High Street, Presteigne, Powys, LD8 2BA

About

Tapas, tacos, burgers, brunch, lovely wines, local produce, ales, spirits and more.

Opening times:

Mon, Thur & Fri: 6pm-10pm

Sat: 12pm-3pm & 6pm-10pm

Sun: 10am-3pm

Contact:

Contact: Ross

Email: info@welcometocrocketts.com

Website: www.welcometocrocketts.com

Phone: 01544 260017

Disabled access but regrettably no toilets.

No pets allowed.

EARDISLEY

The New Strand Eardisley, Herefordshire, HR3 6PW

About

Café, restaurant, bar. Second hand and new local books. Post office.

Opening times:

Café/Restaurant: 9am-6pm

Closed Tuesday

Bar: 11am-11pm

Tuesday: 5pm-11pm

Post Office: 9am-5.30pm

Tuesday: 9am-1pm

Saturday: 9am-12:30pm

Closed Sunday

Contact: Briar Cardwell

Email: ewancardwell@hotmail.co.uk

Phone: 01544 327285

Disabled access. Pets allowed.

MONKLAND

Monkland Cheese Dairy The Pleck, Monkland, HR6 9DB

About

Local cheese made in adjacent dairy. Café and cheese shop selling local produce including Little Hereford cheese.

Opening times:

Mon-Sat: 10am-4pm

Contact: Karen Hindle

Email: info@monklandcheesedairy.co.uk

Website: www.monklandcheesedairy.co.uk

Phone: 01568 720307

Disabled access. Pets allowed.

EARDISLAND



Rita's Tea Rooms Adlen House, Eardisland, HR6 9BD

About

Serving light lunches. All day breakfasts. Sunday lunches. Cream teas and homemade cakes. Takeaways available. Large garden with summer house.

Opening times:

Daily: 9.30am-3.30pm

Last orders: 2.45pm

Sun: 12 noon-2pm

Closed Tues

Contact: Rita Forrester

Email: ritaforrester@hotmail.com

Phone: 01544 388064

Disabled access. Pets allowed in garden only.





Our Address

Kington Tourist Information Centre
5 Church Street,
Kington,
Herefordshire,
HR5 3AZ

Email: info@kingtontourist.info

Website: www.kingtontourist.info

Phone: 01544 230778



This leaflet has been compiled from information supplied to the Kington Tourist Group who cannot accept responsibility for any inaccuracies. Please check all details and opening times with the establishment concerned.